



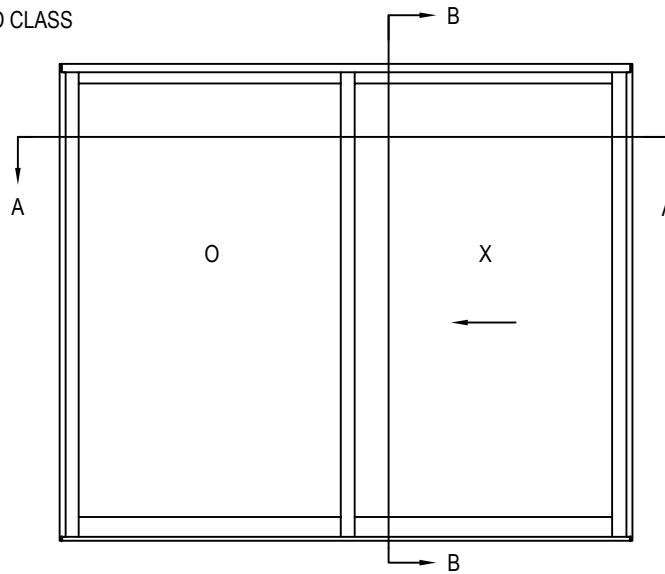
ALL WEATHER
ARCHITECTURAL ALUMINUM

ALL WEATHER ARCHITECTURAL ALUMINUM
777 ALDRIDGE ROAD
VACAVILLE, CA 95688
P: 707.452.1600
F: 707.452.1616
www.allweatheraa.com

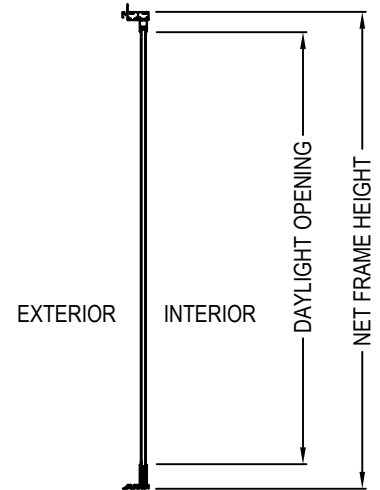
SELECT DESIRED FINISH:

CLEAR ANODIZED CLASS

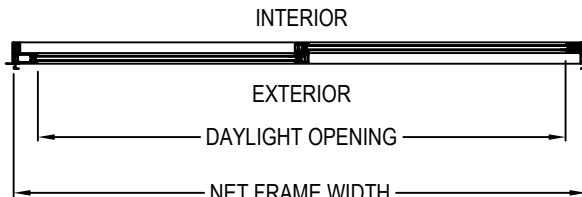
DARK BRONZE ANODIZED CLASS



ELEVATION



SECTION B-B



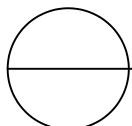
SECTION A-A

FEATURES

- MAX PANEL HEIGHT: 144", MIN. PANEL HEIGHT: 46"
- MAX PANEL WIDTH: 94", MIN. PANEL WIDTH 32"
- MAX PANEL SIZE OF 70 SQUARE FEET
- UP TO 4 PANELS WIDE
- THERMALLY BROKEN FRAME

NOTES:

1. INSTALLATION TO BE COMPLETED IN ACCORDANCE WITH MANUFACTURER'S SPECIFICATIONS.
2. DO NOT SCALE DRAWING.
3. THIS DRAWING IS INTENDED FOR USE BY ARCHITECTS, ENGINEERS, CONTRACTORS, CONSULTANTS AND DESIGN PROFESSIONALS FOR PLANNING PURPOSES ONLY. THIS DRAWING MAY NOT BE USED FOR CONSTRUCTION.
4. ALL INFORMATION CONTAINED HEREIN WAS CURRENT AT THE TIME OF DEVELOPMENT BUT MUST BE REVIEWED AND APPROVED BY THE PRODUCT MANUFACTURER TO BE CONSIDERED ACCURATE.
5. ADDITIONAL INFORMATION (MAY NOT BE VISIBLE) AVAILABLE IN MODEL SPACE.
6. CONTRACTOR'S NOTE: FOR PRODUCT AND COMPANY INFORMATION VISIT www.CADdetails.com/info AND ENTER REFERENCE NUMBER 4461-091



SERIES 8150 DOORS - SLIDING

STANDARD NAIL ON - OX SLIDING DOOR WITH LOW SILL AND STANDARD HARDWARE